



**SOMAIYA**  
VIDYAVIHAR UNIVERSITY

K J Somaiya Institute of Management

**40+**  
Years

K J Somaiya  
Institute of Management

# K J Somaiya Institute of Management

## MBA EXECUTIVE PLACEMENT BROCHURE **2023-24**



**AACSB**  
ACCREDITED



# Contents

<b>01. Somaiya Vidyavihar University</b>	Pg 03
<b>02. Director's Message</b>	Pg 04
<b>03. Guiding Factors</b>	Pg 05
<b>04. Stakeholders Perceptions - Ranking</b>	Pg 06
<b>05. About MBA Executive</b>	Pg 07
Differentiating Factors of MBA – Executive	Pg 09
Testimonials	Pg 10
Course Curriculum	Pg 11
<b>06. Experiential Learning</b>	Pg 13
<b>07. Executive Education</b>	Pg 16
<b>08. Student Activities</b>	Pg 20
<b>09. Alumni Relations</b>	Pg 21
List of Illustrious Alumni	Pg 22
<b>10. Placements at KJSIM</b>	Pg 24
Corporate Engagement Activities	Pg 25
Why recruit from KJSIM	Pg 26
Placement Process	Pg 27
Batch Profile	Pg 28
Recruiters	Pg 31
Career Management & Corporate Relations (CMCR)	Pg 33





# Somaiya Vidyavihar University

---

Somaiya Vidyavihar was established over eight decades ago by Padmabhushan Shri Karamshi Jethabhai Somaiya and is located in a sprawling 50-acres green campus in Mumbai, India. With its rich experience in managing educational institutions and imparting quality education. The University offers numerous opportunities and multi-disciplinary programs to students worldwide.

The University currently educates over 39,000 students across various subjects such as Engineering, Design, Humanities and Sciences, Management, Library & Information Science, Religion & Culture, Sports, and Music. The students and faculty are drawn from diverse backgrounds and cultures, making Somaiya Vidyavihar a melting pot of ideas and perspectives.

The University's 'major-minor' options allow students to connect with a diverse pool of international alumni. The University believes in granting its students the **"Freedom of Possibilities"** to pursue their passions and discover their true selves through a comprehensive portfolio of programs across various fields.

In addition, the University is home to a cutting-edge business incubation centre that acts as a springboard for budding entrepreneurs/start-ups. Graduates have access to numerous career opportunities through the placement cell, and the on-campus hostel accommodation provides a secure and pleasant living environment.



# Director's Message

The Institute



It gives me great pleasure to introduce you to the talented pool of students from the MBA Executive (Full-Time) batch of 2022-23 at K J Somaiya Institute of Management (KJSIM), Somaiya Vidyavihar University.

With **40+ years of legacy**, KJSIM, works with a mission to foster a spirit of inquiry, enable livelihoods, encourage innovations, and create good citizenships. At KJSIM, we strive to provide our students with a holistic education that combines academic learning, practical industry exposure, and a strong emphasis on personal and professional development. Our curriculum is carefully drafted and delivered by experienced faculty members and industry experts. The program also comprises of various initiatives like deep reflective learning, industry immersions, capstone projects, research work etc.

Graduating from KJSIM after working in industry for more than 5 years, is not only about their academic excellence but also their ability to think critically, adaptability to change, navigate through complex business challenges. Throughout their time at KJSIM, the students engage in experiential learning initiatives, industry internships, and real-world live projects, all of which contribute to their leadership skills, strategic thinking, and decision-making abilities.

Moreover, our commitment to hone students' soft and hard skills and emphasising on values and governance, fosters a culture of ethical leadership and social responsibility. This ensures that our graduates not only possess Leadership Skills & Strategic Focus but also understand the importance of making a positive impact on society.

On behalf of KJSIM, I extend an invitation for campus engagement and placements. We are confident that our students will prove to be valuable assets, bringing fresh perspectives, innovative ideas, and a drive for excellence to your team.



**Raman Ramachandran, Ph.D.**

**Director - K J Somaiya Institute of Management**

Dean, Faculty of Management Studies,

Somaiya Vidyavihar University

# Guiding Factors

---

1



## Vision

To build a world class research and teaching institution that is global in the reach of its ideas and universal in its service.

2



## Mission

To foster a spirit of inquiry, enable livelihoods, encourage innovations and create good citizenships.

3



## Values

- Integrity: At a personal and professional level, Integrity is fundamental to everything that we do.
- Excellence: We believe in Excellence in all our pursuits.
- Curiosity: We nurture Curiosity to build a conducive teaching-learning and research environment.
- Collaborative: We provide an Inclusive and Collaborative culture.
- Humility: Humility is at the core of our existence

4



## Motto

We practice what we teach

5



## Strengths

- 40+ years of Excellence
- Based in Financial Capital of India
- One of Top Rank B-schools in India
- Experiential Learning, Global Exposure and Strong Alumni base

# Stakeholders Perceptions – Rankings



## AACSB

**We are now an AACSB accredited Institute; AACSB accredited B-Schools are recognized worldwide by top employers and other Universities.**



- ✓ 19<sup>th</sup> AACSB accredited B-School in India.
- ✓ Top 5% of world's 13,000 business programs to have achieved the hallmark of excellence in business education worldwide.
- ✓ The accreditation reinforces the Institute's commitment to quality and creates a strong platform to reach greater heights on the journey of building future leaders in management.

AACSB International (Association to Advanced Collegiate School of Business), a global non-profit association, connects educators, students, and business to achieve a common goal: to create the next generation of great leaders. Synonymous with the highest standards of excellence since 1916, AACSB provides quality assurance, business education intelligence, and learning and development services to over 1,700 member organizations and more than 900 accredited business schools worldwide. The global organization has offices located in Tampa, Florida, USA; Amsterdam, the Netherlands; and Singapore.



# About MBA Executive

The MBA-Executive programme is a **15 month Full Time General Management Programme similar to the global accelerated MBA programmes**, offered in the US and Europe. This programme is structured around the unique leadership and organizational challenges that global companies need to contend with today. The major areas of emphasis for this course are **Leadership and Strategic Focus**. These expertise and skill areas are important for participants of this course, having over 5 years of corporate experience to boost their career to the next level and to accelerate the transition from functional/technical area to general management. This programme is crafted to fill the knowledge gaps in **Essential Management Disciplines** and prepare the participants to an elevated general management role by moving them from mastery in one specific functional area to a much broader and wider business leadership domain. In essence, this course gives the participants the required leverage to upgrade their skills and acumen from line management to managing people and resources for delivering value for the company.

**Dr. Brajesh Bolia**

**Programme Director, MBA - Executive**



# Andragogy

The facilitation in this program is application oriented. Students are taught through a mix of case studies, practical assignments, workshops, simulations, amongst others. They are taken for industry visits to get a deeper perspective and understanding of various organizational processes as well as appreciate the diversity and complexity of modern day challenges faced by multi-disciplinary business units. Participants are encouraged, among other things, to keep themselves abreast regarding current affairs as well as management tools and techniques through periodic external programs sponsored by the Institute. Industry mentors who are mapped to the student's aspirations and skills provide career guidance to students. Students are encouraged to attend MDPs and Workshops conducted at KJSIM by International faculty who also help to facilitate some of the courses. Workshops, mostly involving Industry specialists, are conducted for enhancing the overall learnings from structured subjects and beyond.



## Summer Projects

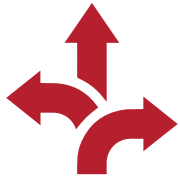
As part of the Third Trimester, students undergo a rigorous summer training on a live Industry project with various corporate houses and organizations. They are introduced to not only basic and advanced organizational level activities, but are also given professional level projects and assignments by the organizations to mould their overall functional as well as cross functional thinking, along with managerial abilities.

## Mentoring Initiatives

A specific student mentee is assigned to each faculty member, so as to guide them both in curricular as well as co-curricular activities. Students can confide with the faculty regarding any issues related to dealing with their day to day challenges, if any, at the institute.



# Differentiating Factors of MBA Executive



## Decision Making

Enhance more effective decision making at the General management level to give increased confidence to take on challenging roles and develop an intense understanding of Value Management.

## Placements

K J Somaiya Institute of Management has been receiving good placements year on year creating job opportunities for the future leaders. Some of the organizations who recruit from our campus are Amazon, Standard Chartered Bank, HCL Technologies Ltd., Astral Poly, Tata AIG, Polaris UK, Accenture, PWC, Target Inc etc.



## Market-Attuned Pedagogy & Curriculum

In the quest to expand the horizons of a future leader, to hone their skills and develop their forte, the pedagogy and curriculum encompasses the latest advancements in the industry.

## Multidisciplinary Learning

In the quest to expand the horizons of a future leader, to hone their skills and develop their forte, the pedagogy and curriculum encompasses the latest advancements in the industry.



## Unleashing the Leader

Understanding of the four pillars provides insights into becoming an effective member of a top management team.

# Testimonials



## Brijmohan Tiwari

**Course & Batch:** PGDM Executive - 2016-17

**Designation:** Senior Business Consultant

**Organization:** Infosys Consulting



For me, Life in K J Somaiya Institute of Management as PGDM Executive student has been breath-taking and enriching. The environment not only helped me in imbibing knowledge but also in developing my overall personality and fuelling confidence in me. Supportive faculty, beautiful campus, quality education, real world experiences and amazing friends. The classes are very interactive and faculties ensure that every student understands what is being taught before proceeding. Course is challenging, yet very informative, so that we don't feel lost when entering the competitive market.

My sincere thanks to all the Faculty members, mentors and everyone in the institute for their support and altruism. They have played a very crucial role shaping me & proved me right, in selecting K J Somaiya Institute of Management over other colleges.



## Kartik Kumar

**Course & Batch:** PGDM Executive 2020-21

**Designation:** Assistant Consultant

**Organization:** Tata Consultancy Services



If you want a transformation or a career change then K J Somaiya's MBA-Executive course is a must for you. Inspite of being offered a new role of a Functional/Business consultant in an MNC firm, the new role felt familiar because I was drilled down the concepts of Data analytics, Data science, Consulting, Change management, Design thinking and many more subjects during my Executive course.

With the brilliant faculty who keep encouraging you and pushing you to newer levels, its then you realize that this course has been tailor made for experienced professionals who need to upgrade themselves to the latest trends in the industry. A power packed course which will give you a second new start in your career with the help of the constant efforts of the placement department as well.



## Monil Hariya

**Course & Batch:** PGDM Executive 2016-17

**Designation:** Senior Associate

**Organization:** PWC



I enrolled at K J Somaiya Institute of Management in 2016 and was a student there for 15 months. The reasons I am grateful for attending K J Somaiya Institute of Management are endless and helped shape who I am today. The small classroom sizes allowed teachers to give their full attention to each student and the opportunity to work one on one with them when needed. It also made it much easier for teachers to get to know their students personally & nurture their skills. I was able to build relationships with my teachers, coaches, administration, and dorm staff, and always had an adult that I felt I could trust to turn to in times of need.

I will forever be grateful for my time at K J Somaiya Institute of Management, the faculty and my batch mate I met there, and the skills I acquired there that have helped me get to where I am today.



## Trimester 1

01. Business Perspectives in the Global Context
02. Managing New Ventures
03. Strategic Marketing Management
04. Financial Reporting & Accounting Standards
05. Cost Modeling & Strategic Cost Management
06. Global Supply Chain Management & Operations
07. Human Behaviour at Work
08. Strategic HRM
09. Economic Indicators
10. Business Modeling with Spreadsheets



## Trimester 2

01. Business Development
02. Corporate Law
03. Corporate Finance and Valuation
04. Country Analysis and Global Marketing
05. Performance Management System
06. Strategic Management
07. Design & Management of Information System
08. Demography & Business Statistics
09. Economic Environment of Business
10. R and Python Programming

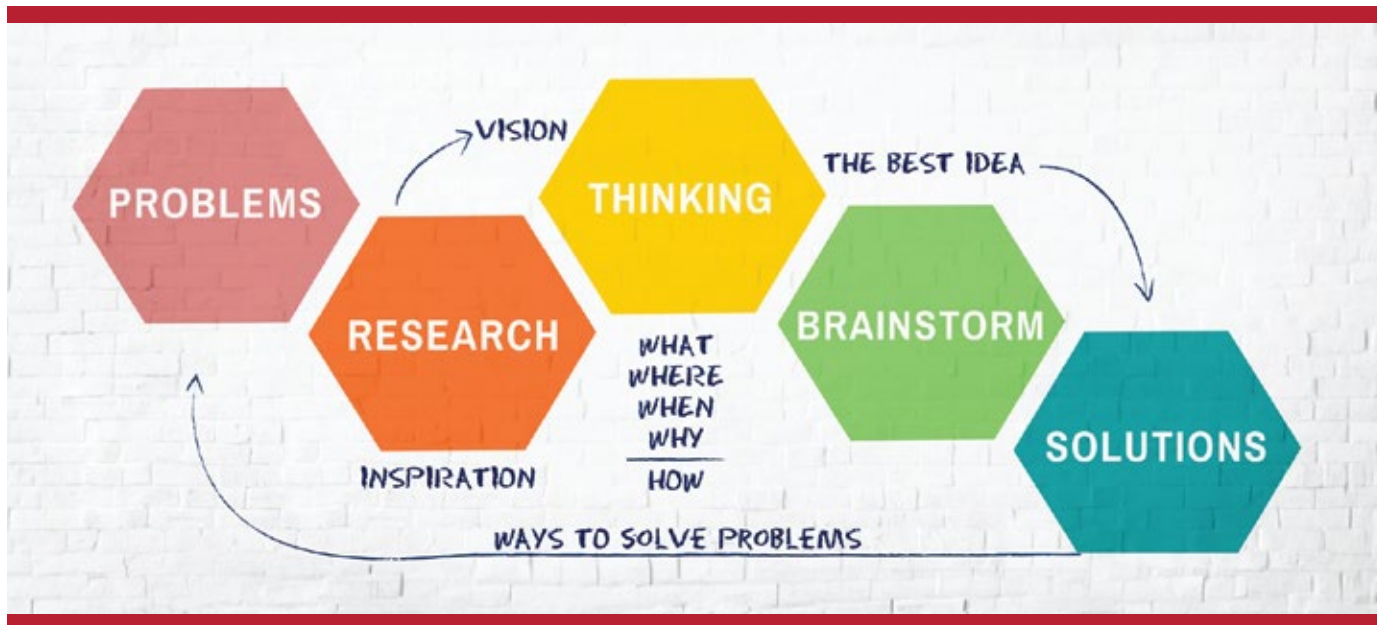


## Trimester 3

01. Summer Internship/Capstone







## Trimester 4

01. Artificial Intelligence and Machine Learning Applications in Business
02. Fintech
03. Project Management
04. Design Thinking
05. International Finance
06. Investment Management
07. Mergers, Acquisitions & Corporate Restructuring
08. Strategic Leadership & Change Management
09. 360 Degree Integrated Marketing Communication
10. Strategic Management Simulation
11. Data Visualization using Tableau
12. Management Research



## Trimester 5

01. Strategic Brand Management
02. Corporate Strategy and Implementation
03. Leadership Incubator
04. ESG & Ethics
05. Digital Transformation
06. Management Consulting
07. Operational Excellence (TQM, BPR, Benchmarking)
08. Master's Thesis



# Experiential Learning

---



The MBA Executive students attended an Experiential Learning Visit to the Amul Facilities in Anand, Gujarat, from 22nd September to 23rd September 2022. This visit was a comprehensive learning experience that threw light on various facets of the dairy industry. During the visit, the participants absorbed the process of manufacturing, supply chain management, and distribution of milk and milk products, including butter, chocolate, and ghee. Dr. Ramki accompanied the students to **AMUL Experiential Learning Visit**. The focus was on Supply Chain, Marketing, Retail and Distribution.



# • International Affiliations



**USA**

- Saint Martin's University
- The University of Akron
- University of San Diego
- New Jersey City University
- New York University



**UK**

- Coventry University
- The University of Edinburgh
- Aston University
- Imperial College London

**Austria**



- IMC University of Applied Sciences, Krems
- University of Applied Sciences Upper Austria, Steyr



**Russia**

- Peter the Great St. Petersburg Polytechnic University,

**Ireland**



- University of Limerick



**Indonesia**

- University of Indonesia

**Spain**



- University of Navarra

**Belgium**



- University College Leuven

**New Zealand**



- Wintec, New Zealand



# • International Affiliations



## Hungary



- Eotvos Lornard University

## China



- Communication University of China
- Yunnan University
- Beijing Foreign Studies University
- Sany Polytechnic Engineering College
- Beijing International Studies University
- Shanghai Lixin University of Accounting of Finance
- Zhejinag Gongshang University
- Renmin University

## Germany



- Duale Hochschule Baden- Wurttemberg
- THI Business School, Ingolstadt

## Nepal



- Uniglobe College  
(Pokhara University Affiliate)



- University of Salvador

## Italy



- University of Brescia



## Singapore

- Management  
Development  
Institute of Singapore



## South Africa

- Vega School of Brand  
Management, Capetown



## Australia

- Curtin University

# Executive Education at KJSIM

Besides our popular MBA programmes, KJSIM offers a wide range of services to our stakeholders including Management Development Programmes, Consultancy Projects, Industry Sponsored Research Projects, Guest Lectures, Coaching and Mentorship Programmes. Institute has offered Executive Education programmes for a diverse clientele from a wide range of industries, Public Sector Undertakings, and Government of India Organizations.

We collaborate and partner with organizations and individuals to build sustainable and impactful programmes, supporting them as they navigate the intricacies and build the capabilities and leaders required to become future ready.



## Programmes for Individuals

- KJSIM's diverse offering of programmes address your development needs. Our portfolios cover the most tenacious business challenges executives face.
- Our top-ranked open enrolment programmes for individuals are where intellectual stimulation, great teaching, and cutting-edge research meet.
- Our courses offer executives the latest business knowledge and theory with practical real-world applications and are facilitated by faculty with industry experience and academic excellence.
- Group & Custom Solutions for Organizations.
- KJSIM helps you design customized learning experiences that transform individual leaders, teams, and organizations.

## What we do?

We will partner with you to cocreate learning experiences directly linked to your organization's unique learning and business goals.



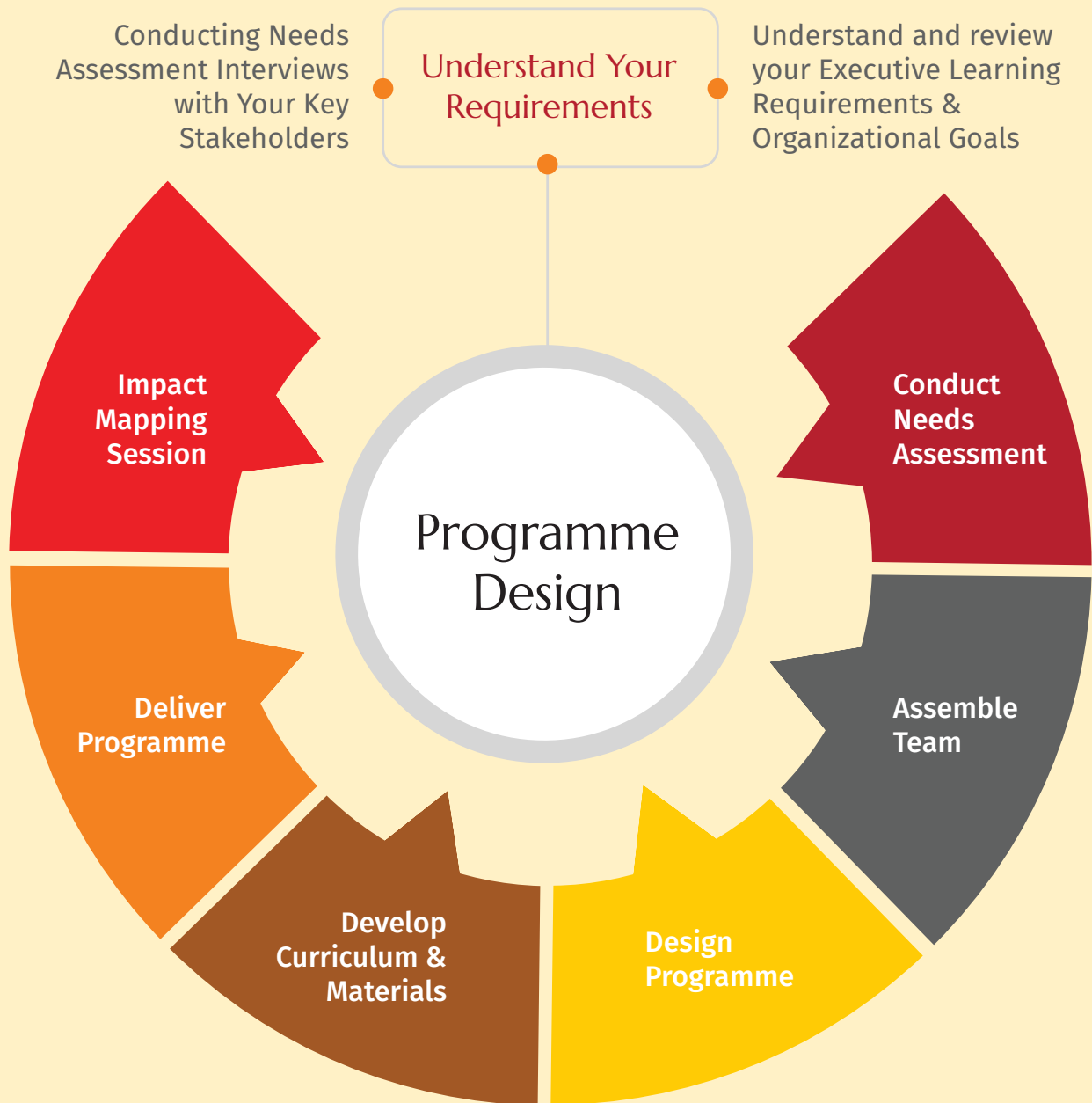
## Programme Learning Format

We deliver your programme in multiple formats that include virtual, in-person and blended delivery options. The curriculum is similar for all delivery options but tailored to take benefit of each delivery method.





## • Our Collaborative Approach •



## Coaching & Consulting

KJSIM has certified executive coaches who as a part of an executive Programme or on independent basis provide coaching to unlock the full potential of your leaders. Certified coaches along with experts in use and interpretation of psychometric tools provide a distinct edge to our coaching assignments.

# ► Clientele

- Godrej & Boyce Manufacturing Co Ltd
- Bajaj Electricals
- LIC of India
- DAE- Department of Atomic Energy
- INS Hamla
- Wellness Forever
- IMC Chamber of Commerce
- Insurance Institute of India (III)
- Godavari Biorefineries Ltd
- Nippon Life India Asset Management Limited
- Owens Corning India Pvt Ltd
- ARKEMA India
- BASF India Ltd (Chemicals)
- Zydus Takeda Healthcare Pvt Ltd
- Galderma India Pvt Ltd
- Merck Specialities Pvt Ltd (Pharmaceuticals)
- K J Somaiya Hospital and Research Center
- Jaslok Hospital and Nanavati Super Speciality Hospital (Hospitals)
- Larsen & Toubro Ltd
- Schaeffler India Ltd
- Mahindra & Mahindra Ltd
- STELLANTIS- earlier Fiat Chrysler Automobiles India Pvt Ltd (Automobiles & Tractors)
- Nuvoco Vistas Corporation Ltd (Cement),
- Konkan Railway Corporation Ltd (Infrastructure)
- Hershey India Pvt Ltd (Foods)
- Reliance Retail Ltd
- Nayara Energy Ltd (Oil & Gas)
- Zieta Technologies Pvt Ltd (Information Technology)



# Student Activities

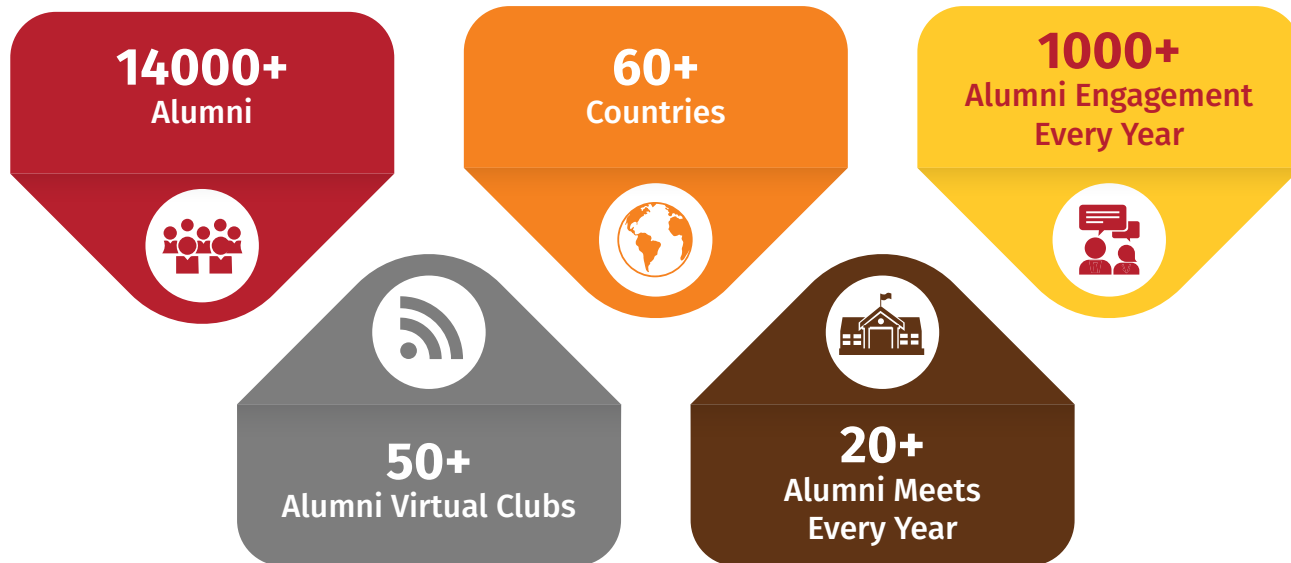
The proactive student bodies at K J Somaiya Institute of Management conducts numerous activities under the aegis of in-house committees in association with many industrial players. Some of the important events conducted by student clubs and forums are:

- **Careers & Conversations** – Rendezvous with eminent speakers from different walks of life
- **TEDxSomaiyaVidyavihar** – Independently organized TED event
- **Spriha** – The Summer Internship Project Competition
- **Melange** – The Annual Inter Collegiate Festival
- **Nostalgia** – The Annual Homecoming event for all our alumni
- **Samavesh** – Sharing of knowledge and experiences of Healthcare practitioners
- **Yudh** – Inter B-School Sports competition
- **Navikaran** – The Marketing festival
- **Investrix** – The Finance festival
- **Commercio** – Annual Inter B-School competition
- **ICON** – Annual festival showcasing IT and other extracurricular skills of MCA students
- **E-Week** – Annual event collaborating with National Entrepreneurship Network inculcating in students the values of Entrepreneurship
- **MasterStroke** – the flagship event of MBA Sports Management





# Alumni Relations



## Initiatives:

**SIMSR Jobs:** An initiative to share lateral job opportunities with Alumni

**Superstars - The Alumni Awards:** Recognize and honour the Alumni who have brought laurels to the Institute, business and/or to the society

**AlCheMy:** Placement mentorship program for the final year students to make informed career choices with the help of Alumni mentors

**Imprints:** Monthly Alumni Newsletter to share latest happenings on campus

**Alumni Virtual Clubs:** 56 virtual Alumni clubs (WhatsApp groups) as support groups

**SIMSR Alumni Network for Entrepreneurs (SANE):** Senior Alumni entrepreneurs mentor budding Alumni entrepreneurs

## Activities:

**Nostalgia:** K J Somaiya Institute of Management's Annual Alumni Meet

**Milaap:** Batch-wise reunions for Batches that completes 35, 30, 25, 20, 15 & 10 years of graduation

**Alumni City Meets:** International & domestic Alumni Meets

**CXO Meet:** Illustrious & senior Alumni industry leaders come together to build the Institute brand

**AlumSpeaks On The Go:** Knowledge sharing interview with illustrious Alum

**Ask The Alums:** Round table on contemporary topic with Alumni experts as panelists

# Notable Alumni from MBA Executive



**Narayanan Palani, 2012**

Engineering Lead  
(Quality),  
Lloyds Banking Group



**Neeraj Chauhan, 2012**

Sr. Financial Analyst,  
Adobe



**Bharat Dalvi, 2013**

Sr. Consultant,  
TCS



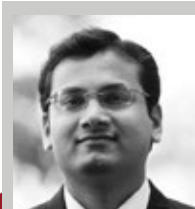
**Ajit Kumar, 2013**

Assistant Manager, KPMG  
Advisory Services



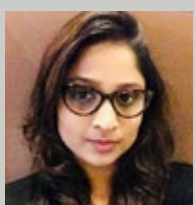
**Hansal Oza, 2013**

Team Leader,  
JP Morgan



**Ravi Sastry, 2013**

AVP,  
IDFC FIRST Bank



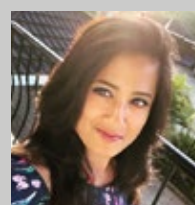
**Harshada More, 2014**

Change Management  
Consultant, TCS



**Aditya Sisodiya, 2015**

Managing Director,  
Top Leads Digital



**Keya Ghose, 2016**

Network Specialist,  
United Nations  
Peacekeeping



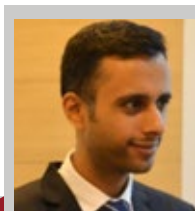
**Kevin Fernandes, 2016**

Business Analyst,  
BNP Paribas



**Renu Yadav, 2016**

Founder & MD, CosMark



**Gunjan Singh, 2016**

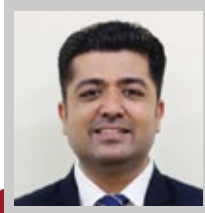
Manager - HR, Wiggles

# Notable Alumni from MBA Executive



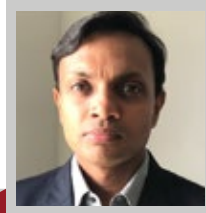
**Monil Hariya, 2017**

Sr. Consultant,  
PwC



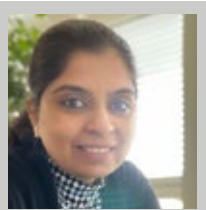
**Ankit Kohli, 2021**

Senior Manager,  
Tata AIG



**Pramit Guha, 2018**

Sr. Manager- Business  
Development, Zaggie  
Prepaid Ocean Services



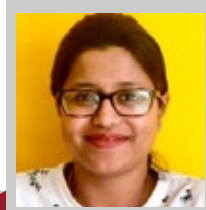
**Nivedita Bhattacharya, 2018**

Operational Procurement  
Manager, Ambuja Cement



**Mili Bagade, 2019**

Workday Financial  
Consultant, Alight Solutions



**Resmita Das, 2021**

Program Manager  
GRS-WHS, Amazon





# Placements at KJSIM

## Preparation for Placements



At K J Somaiya Institute of Management, we ensure that students are in line with the demands of the industry. The aim is to prepare them for participating in the campus placement processes and thereby enhancing their chances of selection. This helps the Recruiting panels of companies to zoom in on who are a near-perfect fit for the job profiles on offer. While the Institute puts a lot of emphasis on assignments, curriculum, and pedagogy, the CMCR office also encourages our students to develop their cognitive abilities through various skill enhancement activities.

We strive hard to not only make them job-ready, but also to enable them to face the multifarious challenges that will confront them as they move out of the portals of this institution. Overall, we follow an integrated approach for broadening the horizons of the students and make them worthy of the assignments they will take up in industry.

### Grooming Standpoints:

- Honing student's business communications skills
- Ensuring that students are well versed with latest industry trends and topics
- Soft skill sessions and training for aptitude tests, mock GDs and PIs
- Personality grooming sessions
- Video-based feedback for encouraging critical thinking
- Exposure to the working of start-ups for firing the Entrepreneurial ambitions
- An overall integrated approach to enhance the capability of the aspirants
- Alumni from different corporate entities/verticals are invited to mentor the students on resume building and placement preparation

# Corporate Engagement Activities

## Guest Lectures, Webinars and Competitions

Connecting with students and sharing industry insights and knowledge through guest lectures by dignitaries from various organizations. Companies may even engage with students through B-plan and Case Study contests and national-level competitions. In the midst of the pandemic CMC has introduced an online knowledge sharing series called “ Evolve” through which industry stalwarts shared their insights.

## Live Projects

Live projects are the short-term assignments extended by companies to enhance industry exposure and employment abilities of the students. The duration of the live project may vary from two weeks to maximum two months.

## Summer Internships

Full-time Summer Internships in the months of April-June for a period of two months to gain hands-on training and learning experience with the organization, in partial fulfilment of the requirement of the degree. Students also get an opportunity to receive a Pre Placement Offer on successful completion of their summer internships.

## Final Placements

Building a fruitful and win-win relationship through permanent employment with the organization.



# Why recruit from K J Somaiya Institute of Management

## Legacy

K J Somaiya Institute of Management was established in 1981. Nestled in the heart of Mumbai, the campus is spread across 50 acres of land and is within 10 km radius of Bandra Kurla Complex – the business district, Airport, New Bombay etc. The lush green campus is home to 1400 management students from all over India who choose KJSIM for its pedagogy, placements, and industry linkages. Consistently rated among the top 20 management institutes and top 10 private B schools, KJSIM constantly benchmarks itself with the best in class across the world. This is evident from its recently accredited AACSB certification, more than 20+ collaborations with international universities, student exchange programs and faculty who have published papers and cases in the top listed Journals and Publishing houses.

## Fabric of KJSIM

KJSIM sees itself as a responsible education institution, that provides the latest in management education and thought leadership to mold the minds of students from diverse backgrounds. Diversity, LGBTQ+, Sustainability, Waste Management are topics that are taken seriously by both faculty and students in the form of research, capstone projects, case studies etc.

## Student Cohort

KJSIM follows a rigorous selection process with weightage given to academic performance, work experience, projects and internship done in the social sector, performance in sports etc. The student cohort here is truly diverse with national level and state level sports players, first time entrepreneurs, musicians, artists, medical students etc. raising the bar for peer-to-peer learning.

## Campus Life

Campus life at KJSIM is active and engaging 24X7, with academic work, lab work, live projects, case studies, jamming to music, sports, club activities etc. Students manage their schedule between studies, socializing and relaxation with all amenities being offered within the campus. From early morning walks, gym sessions, quick Table tennis competitions, book reading sessions at the Haveli, chess at the open chessboard, discussions in the Bloomberg Lab and Omniverse, case studies both inside classroom and outside, life here is dynamic and engaging.



# Placement Process



## Campus Engagement Activities



# Batch Profile 2022 - 23

## Ankit Baid



Total Work Ex: **6 years**  
Domain: **Finance & Marketing**  
Worked with **Kotak, Religare Enterprise Ltd**

**Expertise:** Research, Detailed analysis on Portfolios, Technical Analysis and Client engagement, Attention to detail and diligence

Tap to Visit 

## Bidwattam Chakraborty



Total Work Ex: **6 years**  
Domain: **Finance & Operations**  
Worked with **Ameriprise Financials, Clearwater Analytics**

**Expertise:** Financial Research, Company Analysis, Corporate Action, Trade reconciliation & settlements

Tap to Visit 

## Monica Sultane



Total Work Ex: **7.6 years**  
Domain: **Marketing & Operations**  
Worked with **Family Business Background (Automotive Parts Manufacturing-MSME)**

**Expertise:** Project Management, Communication, Result oriented

Tap to Visit 

## Kruttika Thummalapalli



Total Work Ex: **8.9 years**  
Domain: **Finance & Human Resource**  
Worked with **Colage Communication**

**Expertise:** Project Management (ad film-based), Negotiations, Client and Vendor Relationship Management

Tap to Visit 

## Palash Dixit



Total Work Ex: **7.10 years**  
Domain: **Operations Strategy & Consulting**  
Worked with **Force Motors Limited (OEM)**

**Expertise:** New Product Development, Critical & Analytical Thinking, Problem Solver, and Leadership

Tap to Visit 

## Pavan



Total Work Ex: **8.1 years**  
Domain: **Operations & Marketing**  
Worked with **Polycab India Ltd., V-Guard Ind. Ltd.**

**Expertise:** PPC, Six-Sigma Green Belt, Lean Manufacturing, Operational Excellence

Tap to Visit 

# Batch Profile 2022 - 23

## Pooja Pavithran



Total Work Ex: **5.5 years**  
Domain: **Operations & Data Science**  
Worked with **Thyssenkrupp Industrial Solution**

**Expertise:** Project management, Team Management, Client Relationship Management, Structural Design & Planning


Tap to Visit 

## Prashant Agarwal



Total Work Ex: **9.5 years**  
Domain: **Marketing & Data Science**  
Worked with **Amity group (UNIVO)**, **BYJU's**, **Panacea Biotech**

**Expertise:** Developing Marketing Strategies, Market Research, Analytics, Project Management

Tap to Visit 

## Pritam Panigrahi



Total Work Ex: **5.5 years**  
Domain: **Operations & Data Science**  
Worked with **Cognizant Technology Solution & TCS**

**Expertise:** Product Development, Customer Service, Time Management, Task Prioritization, and De-Escalation

Tap to Visit 

## Jitesh Pujari



Total Work Ex: **7.5 years**  
Domain: **Sales & Operations**  
Worked with **Larsen & Toubro (Electrical & Automation)**, **STG Heating Pvt Ltd.**

**Expertise:** Relationship Building, Problem Solving & Consultative Selling, ROI Calculation

Tap to Visit 

## Romi Chatterjee



Total Work Ex: **7 years**  
Domain: **Finance & Consulting**  
Worked with **Axis Bank Ltd.**

**Expertise:** Trade & Forex, Banking Operations, Building Strong Customer Relationships, Prompt and reliable communication


Tap to Visit 

## Siddharth



Total Work Ex: **5.5 years**  
Domain: **Operations & Marketing Analytics**  
Worked with **Ranjit Buildcon Limited**

**Expertise:** Team Management, Client Relationship Management, Technical Quality Assurance, Problem solving

Tap to Visit 



# Batch Profile 2022 - 23

## Chaitanya Choudhary



Total Work Ex: **5.9 years**  
Domain: **Finance strategy & consulting**  
Worked with **Accenture Solutions Pvt. Ltd.**

**Expertise:** Financial Analysis, Excellent Communicator, Structured Thinking and Planning

Tap to Visit



## Navin Poojari



Total Work Ex: **5.5 years**  
Domain: **Human Resource**  
Worked with **SBI Card, Edelweiss Financial Services**

**Expertise:** Talent Acquisition, Stakeholder Management, Employee Engagement, Effective Communication

Tap to Visit



## Vishnu Prasad



Total Work Ex: **7.6 years**  
Domain: **Data Science**  
Worked with **NSH Corporation, GS L.L.C.**

**Expertise:** Data-driven Decision making, Analytical Thinking, Data Visualisation, Project management, Programming

Tap to Visit



## Anupam Pandey



Total Work Ex: **10.4 years**  
Domain: **Marketing, Strategy & Consulting**  
Worked with **Abbott India, Eisai Pharmaceuticals, Systopic Laboratories**

**Expertise:** Negotiation skills, Strategy thinking & foresight, C Suite Communication and Decisiveness

Tap to Visit



The collage features logos for numerous Indian companies, organized in a grid-like fashion. The logos represent a wide range of industries, including:

- Insurance:** Apollo Munich Health Insurance, ICICI Prudential Life Insurance, TATA AIA Life Insurance, Edelweiss General Insurance, Edelweiss Tokio Life, SBI General Insurance, Kotak Life Insurance, and others.
- Banking & Finance:** Jio Payments Bank Ltd., Shapoorji Pallonji, SBI, Axis Bank, Tommy Hilfiger, Capgemini, Kotak, Jaquar Group, Atomberg, Marsh, Virtusa, Club Mahindra, Paytm, LPI, DE Shaw & Co, unthinkable, DCB Bank, and others.
- E-commerce & Retail:** Amazon, L&T Financial Services, Capgemini, and others.
- Technology & IT:** Wipro, Atos, Analytics Quotient, DBS, KPMG, AON, Jean Martin, All India Football Federation, Hettich, MedikaBazaar, Korn Ferry, Eureka Forbes, Welspun Group, Nielsen, Sprinklr, Alight, LatentView, and others.
- Manufacturing & Industry:** Godrej & Boyce, Shapoorji Pallonji, SBI, Axis Bank, Tommy Hilfiger, Capgemini, Kotak, Jaquar Group, Atomberg, Marsh, Virtusa, Club Mahindra, Paytm, LPI, DE Shaw & Co, unthinkable, DCB Bank, and others.
- Services & Hospitality:** Godrej & Boyce, Shapoorji Pallonji, SBI, Axis Bank, Tommy Hilfiger, Capgemini, Kotak, Jaquar Group, Atomberg, Marsh, Virtusa, Club Mahindra, Paytm, LPI, DE Shaw & Co, unthinkable, DCB Bank, and others.
- Other Companies:** Apollo Munich Health Insurance, ICICI Prudential Life Insurance, TATA AIA Life Insurance, Edelweiss General Insurance, Edelweiss Tokio Life, SBI General Insurance, Kotak Life Insurance, Jaquar Group, Atomberg, Marsh, Virtusa, Club Mahindra, Paytm, LPI, DE Shaw & Co, unthinkable, DCB Bank, and others.

The logos are presented in a variety of colors and styles, reflecting the unique branding of each company. The overall layout is clean and professional, showcasing the diversity of the Indian corporate landscape.



# Recruiters





# Career Management & Corporate Relations Team

## Dr. Niteen Pawar

Head, Career Management & Corporate Relations

+91 9969634293 | +91 22 6728 3005/3050

[niteenpawar@somaiya.edu](mailto:niteenpawar@somaiya.edu)

## Ms. Pooja Anil Rasal

Senior Manager - Career Management & Corporate Relations

+91 9869526143 | +91 22 6728 3004/3050

[p.rasal@somaiya.edu](mailto:p.rasal@somaiya.edu)

## Ms. Shilpa Bhardwaj

Manager - Career Management and Corporate Relations

+91 9320259864 | +91 22 6728 3086/3050

[shilpa.b@somaiya.edu](mailto:shilpa.b@somaiya.edu)

## Mr. Abhijit Dandekar

Manager: Career Management and Corporate Relations

+91 8530049249 | +91 22 6728 3089/3050

[abhijit.dandekar@somaiya.edu](mailto:abhijit.dandekar@somaiya.edu)

## Mr. Rushikesh Prabhakar Patil

Manager - Career Management & Corporate Relations

+91 8879010926 | +91 22 6728 3087/3050

[rushikesh@somaiya.edu](mailto:rushikesh@somaiya.edu)

## Mr. Abhijit Ambre

Assistant Manager - Career Management and Corporate Relations

+91 8452052725 | +91 22 6728 3078/3050

[abhijit.a@somaiya.edu](mailto:abhijit.a@somaiya.edu)

## Mr. Prashant Sharad Wadkar

Administrative Officer - Career Management & Corporate Relations

+91 9987770448 | +91 22 6728 3088/3050

[prashantwadkar@somaiya.edu](mailto:prashantwadkar@somaiya.edu)

## Mr. Siddharth Pandya

Executive - Career Management & Corporate Relations

+91 8452808338 | +91 22 6728 3205/3050

[siddharth.pandya@somaiya.edu](mailto:siddharth.pandya@somaiya.edu)

# Faculty Team

## Dr. Anjali Chopra

Marketing & International Business

[anjali.chopra@somaiya.edu](mailto:anjali.chopra@somaiya.edu)

## Dr. Seetha Pachchhapur

Human Resources

[seetha@somaiya.edu](mailto:seetha@somaiya.edu)

# Address

K J Somaiya Institute of Management, Somaiya Vidyavihar University,  
Vidyavihar East, Mumbai - 400077, Maharashtra. **Website:** [kjsim.somaiya.edu](http://kjsim.somaiya.edu)

## Connect with us:

 [facebook.com/KJSIMofficial](https://facebook.com/KJSIMofficial)  [linkedin.com/school/kjsimofficial](https://linkedin.com/school/kjsimofficial)  
 [instagram.com/kjsim.official](https://instagram.com/kjsim.official)  [twitter.com/kjsimofficial](https://twitter.com/kjsimofficial)